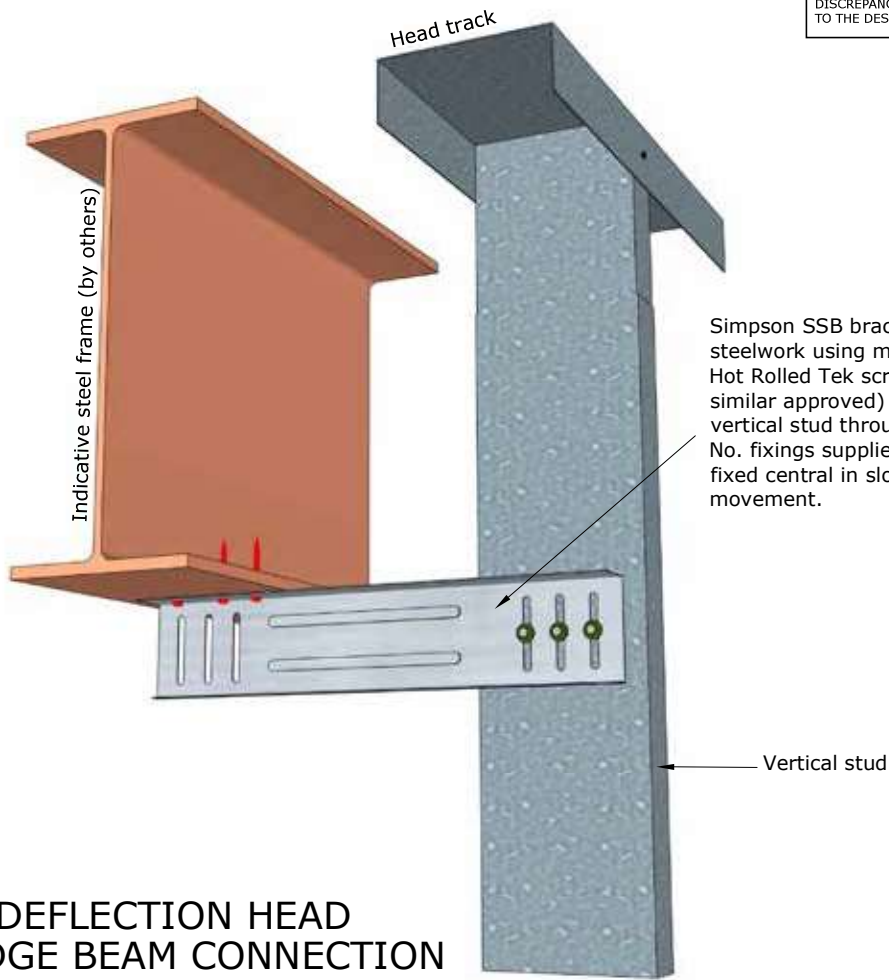


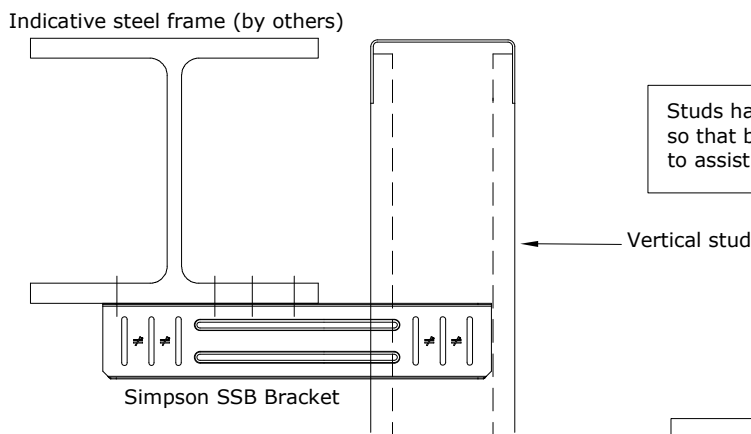
TOLERANCES:
Construction tolerances between frames is -0mm +2mm. Frames are manufactured and assembled to +0mm -2mm.

A4

NOTES
THIS DRAWING IS COPYRIGHT: DO NOT SCALE THIS DRAWING. CONTRACTORS MUST CHECK ALL DIMENSIONS ON SITE, ONLY FIGURED DIMENSIONS TO BE WORKED FROM. ALL ERRORS AND DISCREPANCIES MUST BE IMMEDIATELY REPORTED TO THE DESIGN OFFICE OF EOS FRAMING LTD




TYPICAL DEFLECTION HEAD STEEL EDGE BEAM CONNECTION



TYPICAL SECTION

NOTE: Bracket suitability to be determined by EOS Engineer subject to tech review and cladding loads

Title: TYPICAL HEAD TRACK FIXING DETAIL - TO STEEL EDGE BEAM (S & T)					STAGE:	
					Preliminary:	<input type="checkbox"/>
					Approval:	<input type="checkbox"/>
					Construction:	<input checked="" type="checkbox"/>
Drawn By: TE	Scale: NTS	Drawing No. 208	Revision: F	Approved By: AH/KB	Date: AUG 2020	

EOS Framing Ltd, Heighington Lane, Aycliffe Industrial Park, Newton Aycliffe, County Durham, DL5 6QG, Tel: 01325 303030