

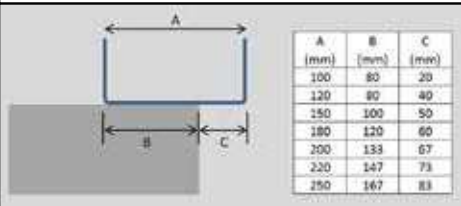
**TOLERANCES:**  
Construction tolerances between frames is -0mm +2mm. Frames are manufactured and assembled to +0mm -2mm.

A4

**NOTES**

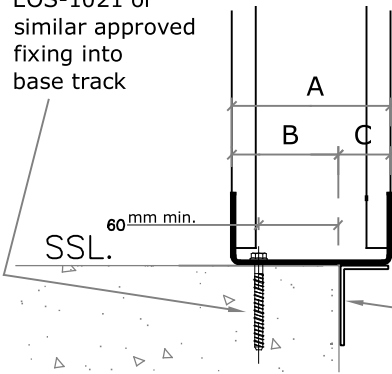
THIS DRAWING IS COPYRIGHT. DO NOT SCALE THIS DRAWING. CONTRACTORS MUST CHECK ALL DIMENSIONS ON SITE, ONLY FIGURED DIMENSIONS TO BE WORKED FROM. ALL ERRORS AND DISCREPANCIES MUST BE IMMEDIATELY REPORTED TO THE DESIGN OFFICE OF EOS FRAMING LTD

**SCI GUIDANCE**



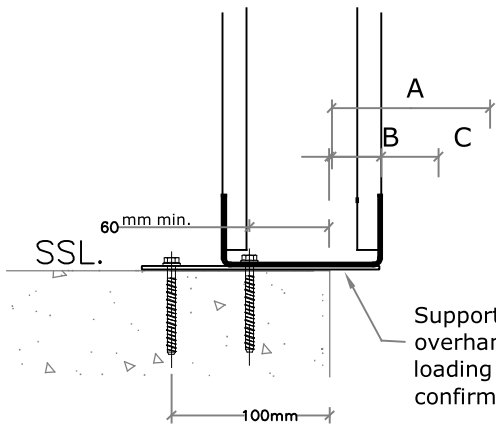
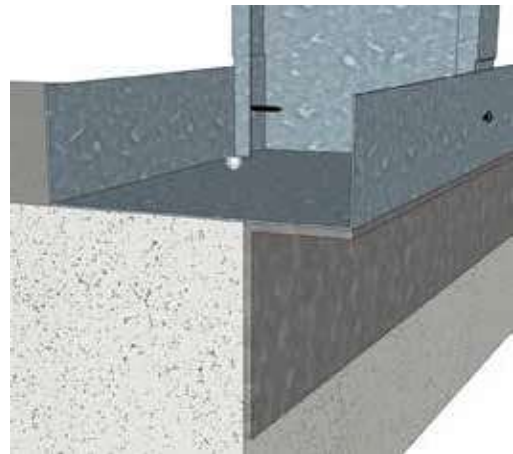
Studs have swaged ends to fit inside the track so that both studs & tracks are the same width to assist in providing as flush a finish as is possible

EOS-1021 or similar approved fixing into base track



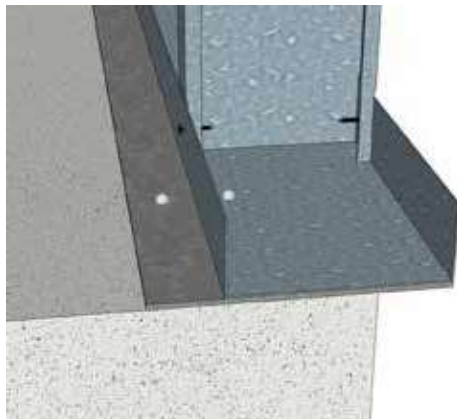
**OPTION 1**

Support angle sized to suit overhang dimension & loading requirements to be confirmed by EOS Engineer



**OPTION 2**

Support plate sized to suit overhang dimensions & loading requirements to be confirmed by EOS Engineer



EOS Framing Ltd, Helghington Lane, Aycliffe Industrial Park, Newton Aycliffe, County Durham, DL5 6QG, Tel: 01325 303030

Title: RESTRAINT OPTIONS FOR OVERHANGS TO TRACK WIDTH (S & T)

STAGE:

Preliminary:   
Approval:   
Construction:



|                 |               |                    |                |                       |                   |
|-----------------|---------------|--------------------|----------------|-----------------------|-------------------|
| Drawn By:<br>PK | Scale:<br>NTS | Drawing No.<br>209 | Revision:<br>E | Approved By:<br>AH/KB | Date:<br>AUG 2020 |
|-----------------|---------------|--------------------|----------------|-----------------------|-------------------|