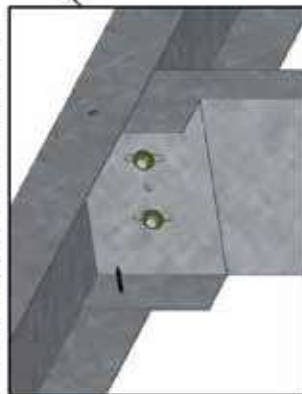


SFS QUICK GUIDE: BASIC INSTALLATION

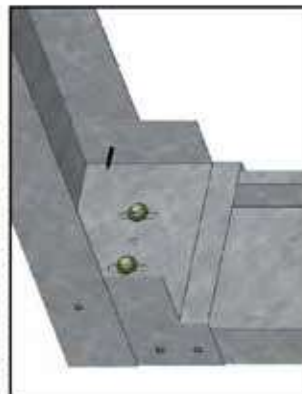
[FOR DHB - DEFLECTION HEAD BRACKETS]

IMPORTANT: TO BE READ IN CONJUNCTION WITH PROJECT SPECIFIC DRAWINGS AND EOS STANDARD DETAILS.

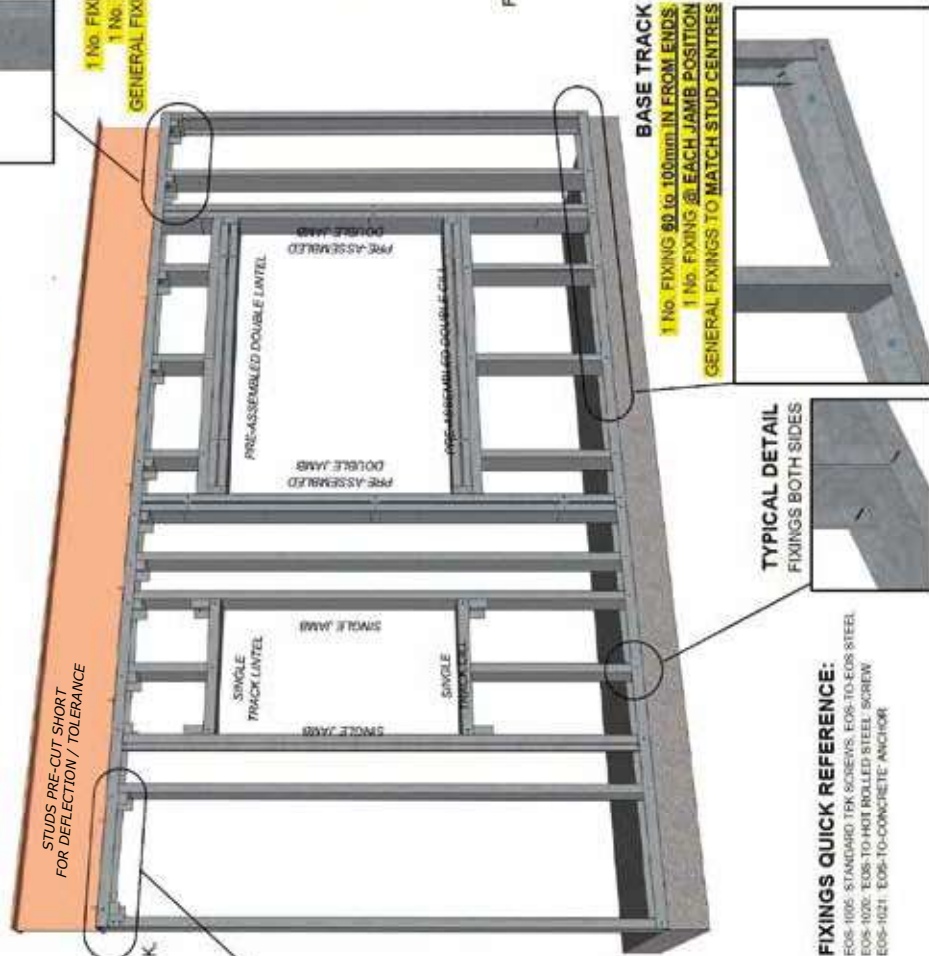
STANDARD DEFLECTION HEAD
DEFLECTION BRACKET **TIGHT UP** INTO HEAD TRACK. LARGE WASHER HEAD SCREWED CENTRALLY



NON-STD DEFLECTION HEAD
AS PER STANDARD METHOD, BUT CLOAKED WITH SHORT PIECE OF TRACK TO ENABLE BRACKET TO OPEN FACE OF STUD



STUDS PRE-CUT SHORT FOR DEFLECTION / TOLERANCE



HEAD TRACK
1 No. FIXING 60 to 100mm IN FROM ENDS
1 No. FIXING @ EACH JAMB POSITION
GENERAL FIXINGS TO MATCH STUD CENTRES



SINGLE LINTEL / CILL SWAGED CRIPPLE TRACK
3 No. STAGGERED FIXINGS TO WEB AND 1 No. FIXING TO FLANGES OF CILL / LINTEL TRACK



DOUBLE STUD PLAIN CRIPPLE TRACK WRAP-AROUND
3 No. STAGGERED FIXINGS TO WEB AND 1 No. FIXING TO EACH FLANGE OF DS

BASE TRACK
1 No. FIXING 60 to 100mm IN FROM ENDS
1 No. FIXING @ EACH JAMB POSITION
GENERAL FIXINGS TO MATCH STUD CENTRES



TYPICAL DETAIL
FIXINGS BOTH SIDES

FIXINGS QUICK REFERENCE:
EOS-1006: STANDARD TEK SCREWS, EOS-TO-EOS STEEL
EOS-1020: EOS-TO-HOT ROLLED STEEL SCREW
EOS-1021: EOS-TO-CONCRETE ANCHOR



NOTES
THIS DRAWING IS COPYRIGHT: DO NOT SCALE THIS DRAWING. CONTRACTORS MUST CHECK ALL DIMENSIONS ON SITE. ONLY FIGURED DIMENSIONS ARE TO BE USED. ANY UNSTATED DIMENSIONS OR DISCREPANCIES MUST BE IMMEDIATELY REPORTED TO THE DESIGN OFFICE OF EOS FRAMING LTD

Title:	INSTALLATION QUICK GUIDE - DEFLECTION HEAD BRACKETS (S & T)				STAGE:
	Drawn By:	Scale:	Revision:	Approved By:	Date:
PK	NTS	C	AH/KB	AUG 2020	
EOS Framing Ltd, Heighington Lane, Aycliffe Industrial Park, Newton Aycliffe, County Durham, DL5 6QG, Tel: 01325 303030					