

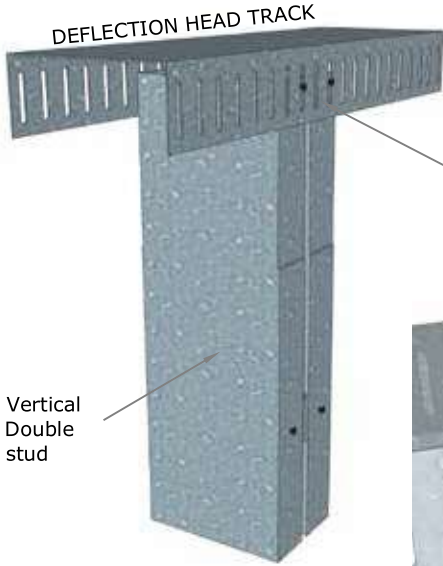
TOLERANCES:
Construction tolerances between frames is -0mm +2mm. Frames are manufactured and assembled to +0mm -2mm.

A4

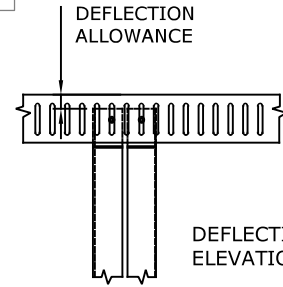
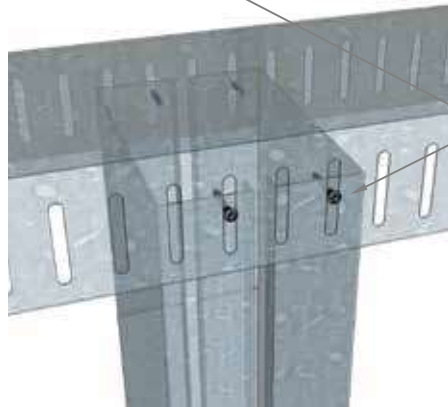
NOTES

THIS DRAWING IS COPYRIGHT: DO NOT SCALE THIS DRAWING. CONTRACTORS MUST CHECK ALL DIMENSIONS ON SITE, ONLY FIGURED DIMENSIONS TO BE WORKED FROM. ALL ERRORS AND DISCREPANCIES MUST BE IMMEDIATELY REPORTED TO THE DESIGN OFFICE OF EOS FRAMING LTD

Studs have swaged ends to fit inside the track so that both studs & tracks are the same width to assist in providing as flush a finish as is possible



HEAD FIXING



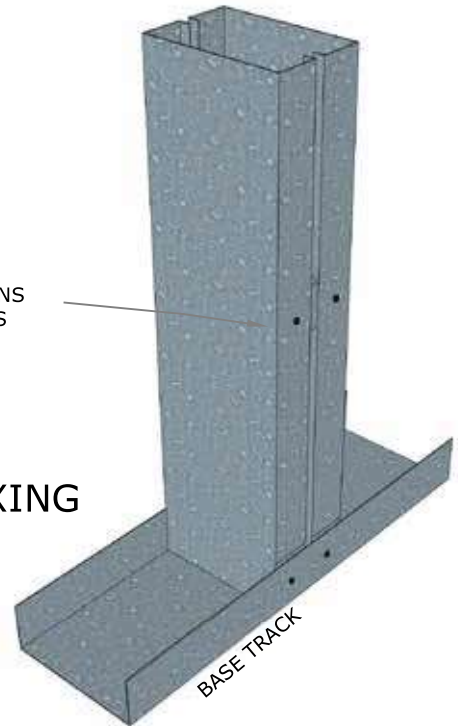
Vertical Double stud fixed to Deflection Head Track through slotted holes using 2 No 5.5 x 25mm tek screws (EOS-1005 or similar approved). Screws fixed central in slot to allow +/- 25mm of movement UNO.

DHT for use with raking pitches up to 5 degrees.
If pitch > 5deg, use DHB

DOUBLE STUD JAMBS MANUFACTURED OFFSITE IN EOS FACTORY

DOUBLE STUDS CONNECTED USING NOGGINS FIXED WITH 4 No. 5.5 x 25mm TEK SCREWS (EOS-1001 or similar approved).

BASE FIXING



NOTE:- DOUBLE STUDS ARE MANUFACTURED AT 175mm WIDE AS STANDARD TO ENCAPSULATE A BRICK TIE CHANNEL POSITION.

DOUBLE STUDS CAN BE MANUFACTURED BETWEEN 100mm AND 225mm WIDE FOR NON-STANDARD APPLICATIONS. PLEASE ENQUIRE WITH EOS.

Title: TYPICAL DOUBLE STUD CONNECTION DETAIL (S & T)
[DHT - DEFLECTION HEAD TRACK]

STAGE:

- Preliminary:
- Approval:
- Construction:

Drawn By: PK	Scale: NTS	Drawing No. 273	Revision: D	Approved By: AH/KB	Date: AUG 2020
-----------------	---------------	--------------------	----------------	-----------------------	-------------------



EOS Framing Ltd, Helghington Lane, Aycliffe Industrial Park, Newton Aycliffe, County Durham, DL5 6QG, Tel: 01325 303030